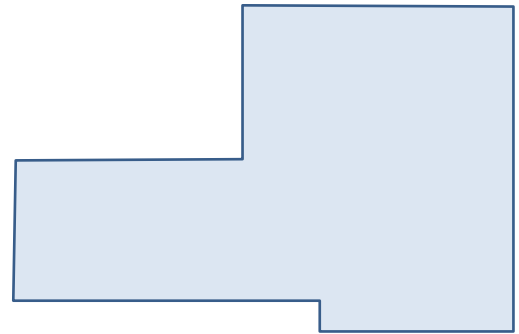
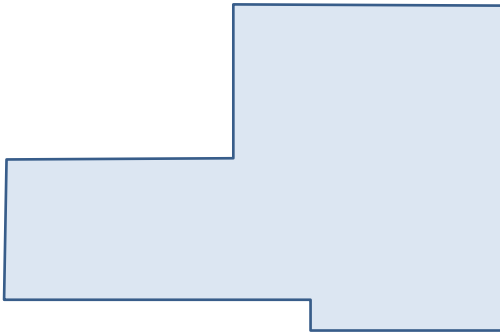


Exercises for Spatial Databases and GIS

Sheet 4 (until 04.12.2015)

Exercise 1 (Label Placement within Polygons)

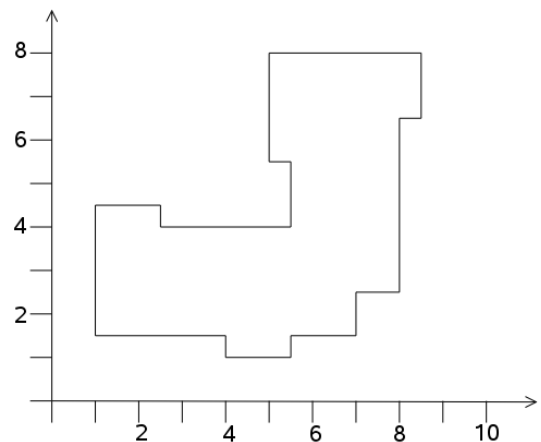
1. Determine a baseline for label placement within the given polygon using
 - a) the Schoppmeyer/Heisser procedure
 - b) the Petzold/Plümer procedure



2. Give an example of a polygon whose Voronoi skeleton isn't connected.

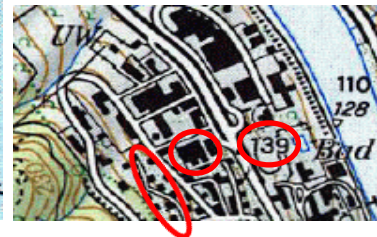
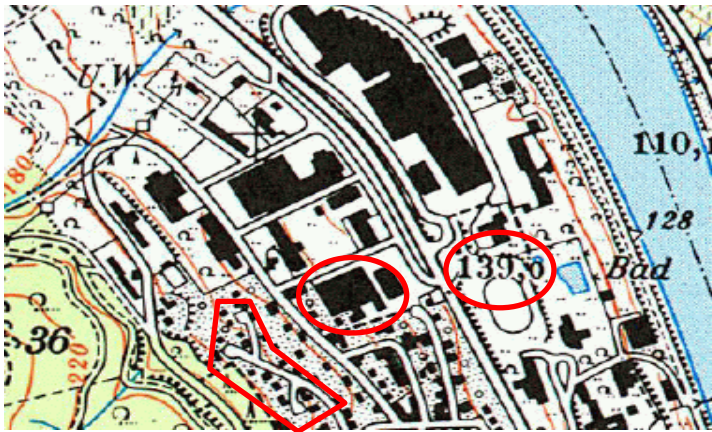
Exercise 2 (Generalization of buildings)

1. Generalize the building given below using the Douglas/Peucker algorithm.
2. Can you think of a strategy for building generalization that guarantees the preservation of right angles?

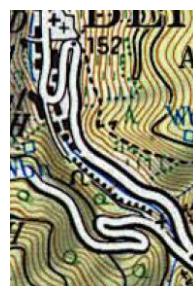


Exercise 3 (Basic Generalization Operations)

1. Which basic generalization operation was used in the marked areas?



2. Give examples for all eight basic generalization operations



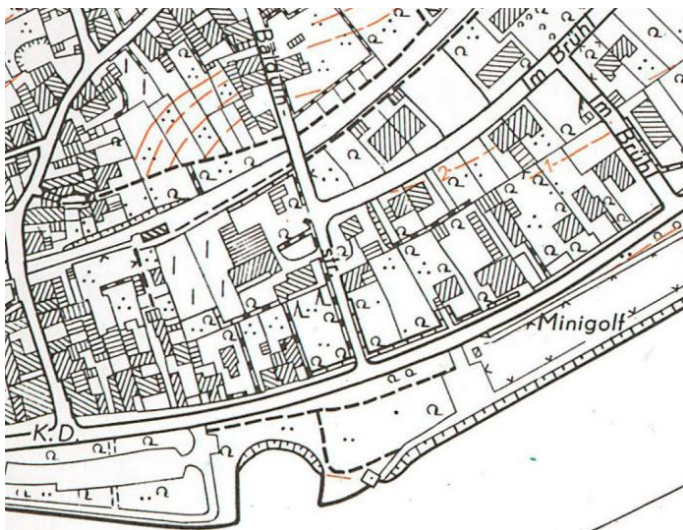
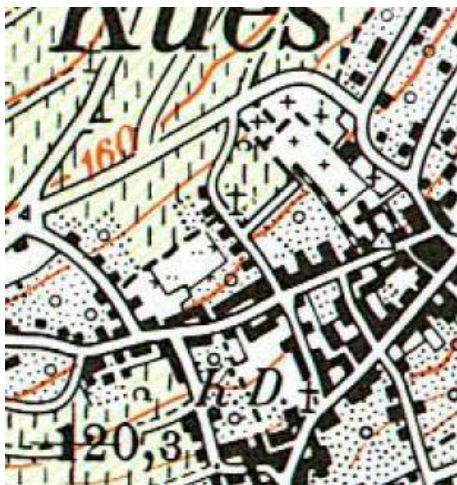


ifis

Institut für Informationssysteme
Technische Universität Braunschweig

Technische Universität Braunschweig
Institut für Informationssysteme
<http://www.ifis.cs.tu-bs.de>

Karl Neumann, Sarah Tauscher



Exercises for Spatial Databases and GIS