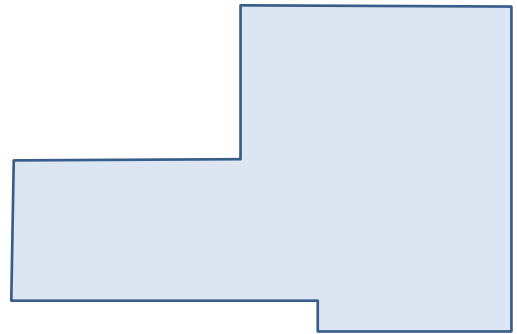
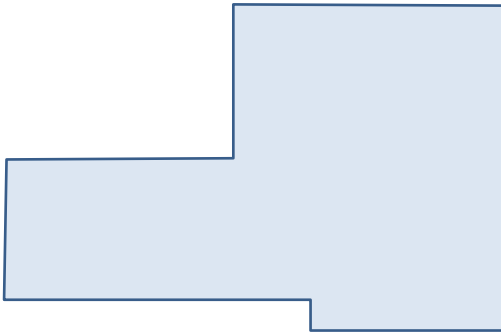


## Exercises for Spatial Databases and GIS

### Sheet 4 (until 25.11.2016)

#### Exercise 1 (Label Placement within Polygons)

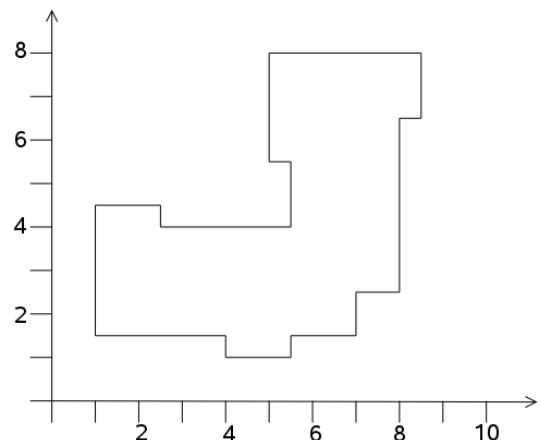
1. Determine a baseline for label placement within the given polygon using
  - a) the Schoppmeyer/Heisser procedure
  - b) the Petzold/Plümer procedure



2. Give an example of a polygon whose Voronoi skeleton isn't connected.

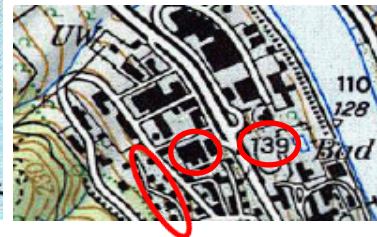
#### Exercise 2 (Generalization of buildings)

1. Generalize the building given below using the Douglas/Peucker algorithm.
2. Can you think of a strategy for building generalization that guarantees the preservation of right angles?

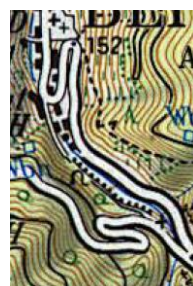


**Exercise 3 (Basic Generalization Operations)**

1. Which basic generalization operation was used in the marked areas?



2. Give examples for all eight basic generalization operations





**ifis**

Institut für Informationssysteme  
Technische Universität Braunschweig

Technische Universität Braunschweig  
**Institut für Informationssysteme**  
<http://www.ifis.cs.tu-bs.de>

Karl Neumann, Sarah Tauscher

